

0CNP2-M39800EN

Directions for the Parts Catalog.

1. This Parts Catalog shows both standard and optional parts.
2. Parts may change without prior notice.
3. The following is an example of the Parts Catalog format.

REF.	LEV.	PARTS NO.	DESCRIPTION	Q'TY						I	R
				(A)	(B)	(C)	(D)	(E)	(F)		
1	1	729595-51390	FUEL INJECTION PUMP	1	1	1	1	1			1
1-1	1	729595-51391	FUEL INJECTION PUMP	1	1	1	1	1		N	1
		(A=E00185) (B=E00200)									
3	2	26022-060162	SCREW M 6X 16	9	9	9	9	9			
3-1	2	26022-060162	SCREW M 6X 16	4	4	4	4	4		K	
		(A=E00156) (B=E00156) (C=E00156) (D=E00156) (E=E00156)									
4	2	129470-51040	CAMSHAFT	1	1	1	1	1			
5	2	122710-51050	BEARING, ROLLER	2	2	2	2	2			
6	2	129470-51060	RETAINER	1	1	1	1	1			

Remarks
(1) BOOST COMPEMSATOR TYPE. OPTIONAL PART, TO E00155,(4JH-DT, 4JH-DTZ

① Ref. No.

The Ref. No. listed may not be in accordance with the illustration Ref. No.

(Ex.) Illustration No.

List Ref No.

1

1

(Before change)

1-1

(After change)

For interchangeable symbols N, R and K, illustrations for new parts may be abbreviated.

② Lev. (Level)

Level indication

The numbers below indicate the level of relativity towards the main part.

1 ---- Main parts (Assembly parts)

2 ---- Sub component included in " 1 ".

3 ---- Sub component included in " 2 ".

Note) Parts that are not for sale are partially illustrated but not listed.

③ Interchangeability Symbol

When a part change takes place, one of the following interchangeability symbols is indicated beside the part.

Symbol	Interchangeability	Contents note
N	Old $\begin{matrix} \leftarrow \text{Yes} \\ \text{No} \rightarrow \end{matrix}$ New	New Part is interchangeable for Old Part but Old Part is not interchangeable for New Part.
Q	Old $\begin{matrix} \leftarrow \text{No} \\ \text{Yes} \rightarrow \end{matrix}$ New	New Part is not interchangeable for Old Part but Old Part is interchangeable for New Part.
R	Old $\begin{matrix} \leftarrow \text{Yes} \\ \text{Yes} \rightarrow \end{matrix}$ New	New/ Old Parts are both interchangeable.
S	Old $\begin{matrix} \leftarrow \text{No} \\ \text{No} \rightarrow \end{matrix}$ New	New/ Old Parts are both not interchangeable.
W		Part newly added.
Z		Part discontinued.
F		Not interchangeable by a single part but interchangeable together with related parts.
K		Changes only for used parts quantities.

④ Effective Machine No.

When a part changes, the effective Machine No. will be indicated in the (A)-(F) column.

Product Symbol	Product No.	Product Symbol	Product No.
C	Clutch No. Compressor No.	F	Machine No. (Agricultural Equip.)
D	Drive No.	M	Machine No.
E	Engine No.		

Note 1) A date may follow the symbol. (Ex.) 1996.01

Note 2) "XXXXX" and "ZZZZZ" are for parts that could not be predicted or for engine models that could not be identified.

Note 3) (A=E00185) is the E (Engine Serial Number) for the column (A) model (in this case 4JH-DT) after the parts design change.

⑤ Remarks

Figures or alphabets (symbols) are entered in the remarks column.

The comments (remarks) on parts that are indicated at the bottom of the illustration are the same symbols as those stated above.

PAINTING COLOR

SECTION	PAINTING COLOR	COLOR SPRAY	MAIN PARTS	COLOR CODE (FIGURE)
Main body	YANMAR Red 1	T O R - 9 0 4 0 0 0 0 3	Handle frame CMP	5 0
Main body	YANMAR White	T O R - 9 0 2 5 0 0 0 2	Fender Handle CMP	1 4
Main body	YANMAR Plain silver M2	T O R - 9 0 3 1 0 0 0 3	Cover, in side CMP Engine frame CMP	1 9

Please surely use **YANMAR** Genuine color spray any **YANMAR** agricultural machines.

Given painting color may be altered for improvement, etc. without prior notice.

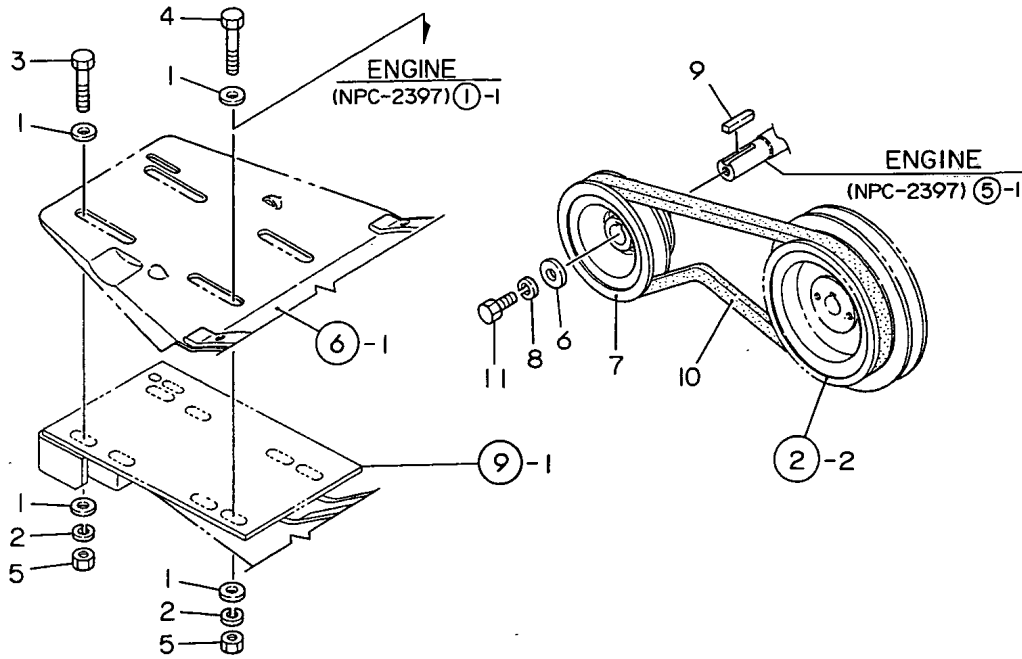
Contents

Fig. No.	Fig. Name
PULLEY & TENSION SECTION	
1.	ENGINE MOUNTING & PULLEY
2.	MAIN PULLEY & TENSION
TRANSMISSION UNIT	
3.	TRANSMISSION CASE N
4.	TRANSMISSION INTERIOR
5.	MAIN CHANGE
WHEEL SECTION	
6.	FENDER
HANDLE SECTION	
7.	HANDLE
8.	TRAVELING CONTROL LEVER
ENGINE FRAME SECTION	
9.	ENGINE FRAME
10.	HITCH
11.	HANDLE COVER
12.	BONNET
LABELS & ACCESSORIES SECTION	
13.	ELECTRICAL PARTS
14.	LABELS

Fig. No.	Fig. Name
15.	TOOLS
WHEEL SECTION	
16.	SKID(ADD,ITEM)
17.	TIRE 3.50-6(ADD,ITEM)
ENGINE FRAME SECTION	
18.	STAND(ADDITIONAL ITEM)

Fig.1. ENGINE MOUNTING & PULLEY

1. ENGINE MOUNTING & PULLEY



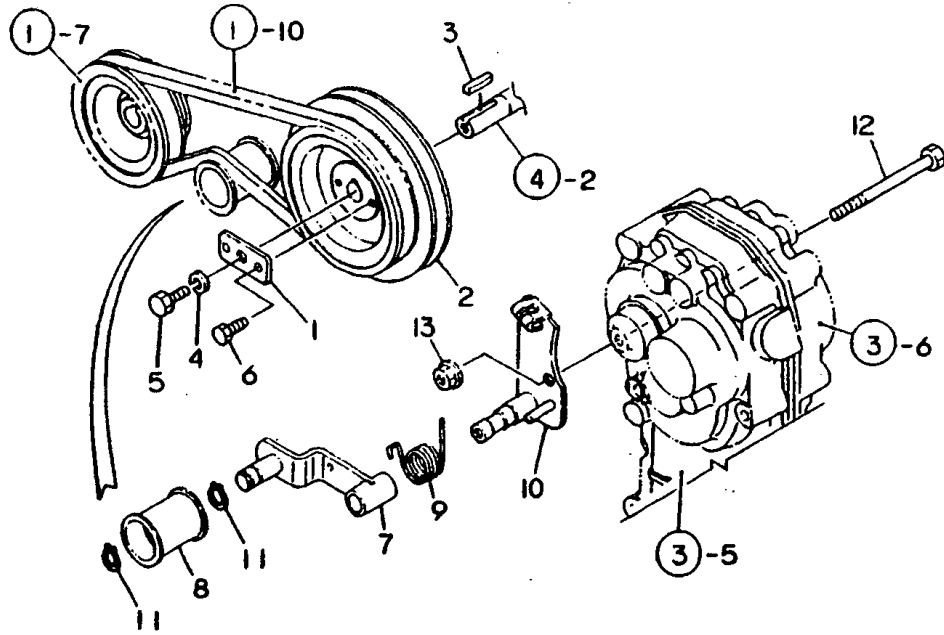
(A)=YK382
(B)=YK382-Y
(C)=YK402G

(D)=YK402C
(E)=YK402P
(F)=

No.	Lev.	Parts No.	Description	Qty						I	R
				(A)	(B)	(C)	(D)	(E)	(F)		
1	1	22137-080000	WASHER, 8	8	8	8	8	8			
2	1	22217-080000	WASHER, SPRING 8	4	4	4	4	4			
3	1	26117-080402	BOLT 8X40	2	2	2	2	2			
4	1	26117-080452	BOLT M 8X 45	2	2	2	2	2			
5	1	26717-080002	NUT, M8	4	4	4	4	4			
6	1	1D1140-11420	WASHER,PULLEY	1	1	1	1	1			
7	1	1A2130-12000	PULLEY,ENGINE	1	1	1	1	1			
8	1	22217-080000	WASHER, SPRING 8	1	1	1	1	1			
9	1	22512-050300	KEY, 5X 30	1	1	1	1	1			
10	1	25123-003401	V-BELT, B34H	1	1	1	1	1			
11	1	26117-080162	BOLT M 8X 16 PLATED	1	1	1	1	1			

Fig.2. MAIN PULLEY & TENSION

2. MAIN PULLEY & TENSION



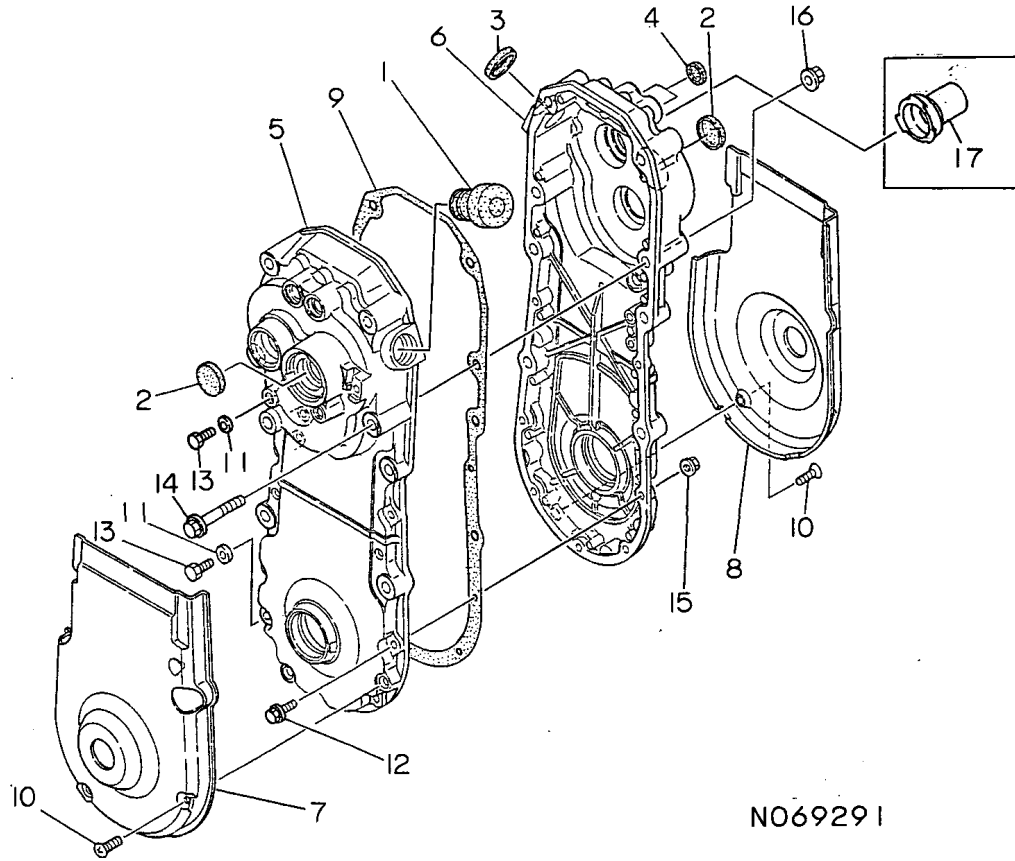
(A)=YK382
(B)=YK382-Y
(C)=YK402G

(D)=YK402C
(E)=YK402P
(F)=

No.	Lev.	Parts No.	Description	Qty						I	R
				(A)	(B)	(C)	(D)	(E)	(F)		
1	1	1A1470-10040	CLAMP SEAT,PULLEY	1	1	1	1	1			
2	1	1A2130-13300	PULLEY, MAIN SHAFT	1	1	1	1	1			
3	1	1A1105-15200	KEY 5X5X30,FEATHER	1	1	1	1	1			
3-1	1	22512-050300	KEY, 5X 30 (C=F001872) (D=F001872) (E=F001872)			1	1	1			N
4	1	22217-080000	WASHER, SPRING 8	1	1	1	1	1			
5	1	26117-080162	BOLT M 8X 16 PLATED	1	1	1	1	1			
6	1	26476-060142	SCREW, TAPPING M6X14	2	2	2	2	2			
7	1	1A2130-13000	ARM COMPL,TENSION	1	1	1	1	1			
8	1	1A2000-13050	ROLLER COMP.,TENSION	1	1	1	1				
8-1	1	1A2000-13051	ROLLER COMP.,TENSION (A=FXXX) (B=FXXX) (C=FXXX) (D=FXXX)	1	1	1	1				N
8-2	1	1A2000-13052	ROLLER COMP.,TENSION (A=FXXX) (B=FXXX) (C=FXXX) (D=FXXX)	1	1	1	1	1			N
9	1	1A2000-13190	SPRING,TENSION RETRN	1	1	1	1	1			
10	1	1A2130-13200	FULCRUM COMP,TENSION	1	1	1	1	1			
11	1	22242-000150	RING, 15	2	2	2	2	2			
12	1	26157-101002	BOLT, M10X100 PLATED	1	1	1	1	1			
13	1	26377-100002	NUT, M10	1	1	1	1	1			

Fig.3. TRANSMISSION CASE N

3. TRANSMISSION CASE N



NO6929 I

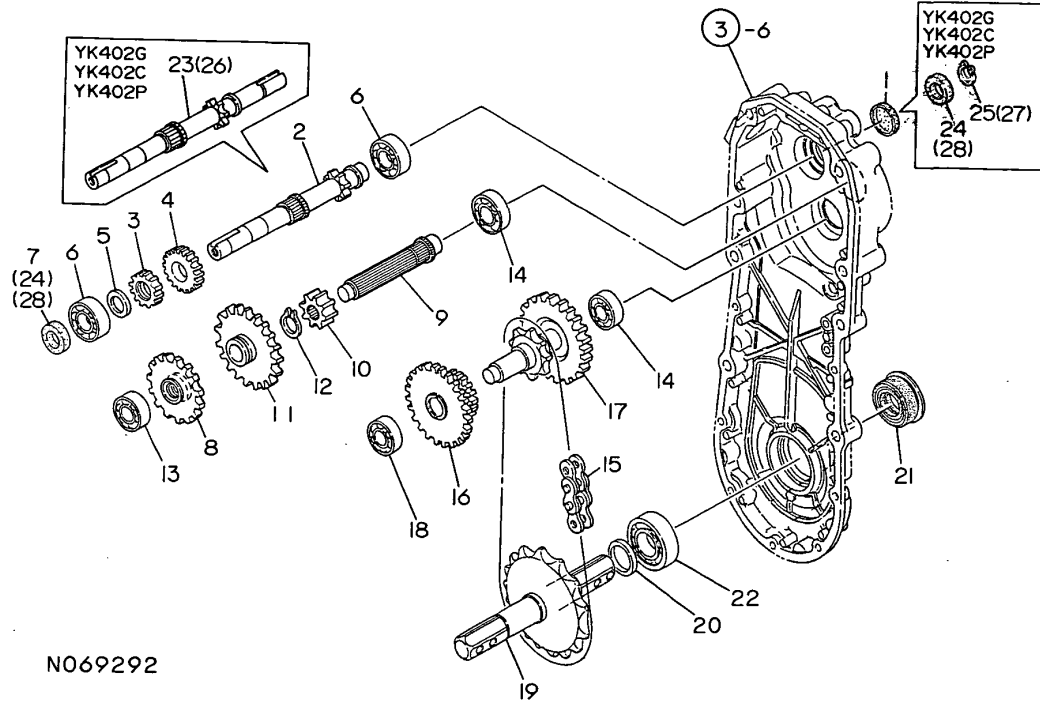
(A)=YK382
(B)=YK382-Y
(C)=YK402G

(D)=YK402C
(E)=YK402P
(F)=

No.	Lev.	Parts No.	Description	Qty						I	R
				(A)	(B)	(C)	(D)	(E)	(F)		
1	1	1A1470-20090	CAP 35,OIL FILLER	1	1	1	1	1			
2	1	1A1750-20410	CAP 30X5,SEAL	2	2	2	2	2			
3	1	1A1750-20421	CAP 26X6,SEAL	1	1	1	1	1			
4	1	1A1750-20431	CAP 18X7,SEAL	2	2	2	2	2			
5	1	1A1950-21000	CASE L,TRANSM.	1	1	1	1	1			
6	1	1A2130-21010	CASE R,TRANSMISSION	1	1	1	1	1			
7	1	1A2130-21050	COVER L,PROTECTIVE	1	1	1	1	1			
8	1	1A2130-21060	COVER R,PROTECTIVE	1	1	1	1	1			
9	1	1A1950-21200	GASKET, MISSION CASE	1	1	1	1	1			
10	1	22867-600160	SCREW, 6X16	6	6	6	6	6			
11	1	23414-080000	GASKET, 8X1.0	2	2	2	2	2			
12	1	26106-060252	BOLT, M6X 25 PLATED	7	7	7	7	7			
13	1	26117-080122	BOLT M 8X 12 PLATED	2	2	2	2	2			
13-1	1	1A2001-21250	BOLT M8X12,COLLAR HD	2	2	2	2	2		S	
		(A=F001401)	(B=F001401)	(C=F001036)	(D=F001036)						
14	1	26137-100502	BOLT, M10X 50 PLATED	1	1	1	1	1			
15	1	26367-060002	NUT, M6	7	7	7	7	7			
16	1	26377-100002	NUT, M10	1	1	1	1	1			
17	1	1A1220-28290	CAP, PTO	1	1	1	1	1		W	
		(A=F000001)	(B=F000001)	(C=F000001)							

Fig.4. TRANSMISSION INTERIOR

4. TRANSMISSION INTERIOR



N069292

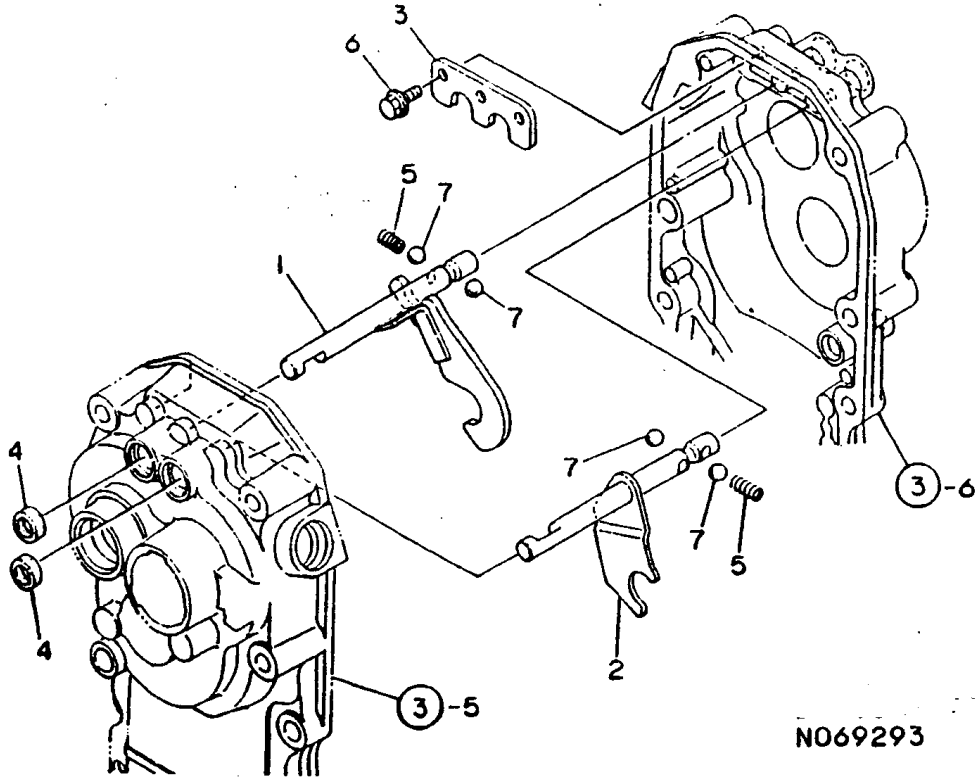
(A)=YK382
(B)=YK382-Y
(C)=YK402G

(D)=YK402C
(E)=YK402P
(F)=

No.	Lev.	Parts No.	Description	Q'ty						I	R
				(A)	(B)	(C)	(D)	(E)	(F)		
1	1	1A1750-20410	CAP 30X5,SEAL	1	1	1					
1-1	1	1A1750-20410	CAP 30X5,SEAL (C=F000966)			1					Z
2	1	1A2138-23000	SHAFT 382,MAIN	1	1	1					
2-1	1	1A2138-23000	SHAFT 382,MAIN (C=F000966)			1					Z
3	1	1A2130-23020	GEAR 14	1	1	1	1	1			
4	1	1A2130-23030	GEAR 19	1	1	1	1	1			
5	1	1E4060-74090	LINER 17X24X1	1	1	1	1	1			
6	1	24101-062034	BEARING, BALL 6203	2	2	2	2	2			
7	1	24421-173007	SEAL, OIL TC173007	1	1	1					
7-1	1	24421-173007	SEAL, OIL TC173007 (C=F000966)			1					Z
8	1	1A2130-23110	GEAR 31,SLIDE	1	1	1	1	1			
9	1	1A2130-23200	SHAFT,H SUB-	1	1	1	1	1			
10	1	1A2130-23210	GEAR 13	1	1	1	1	1			
11	1	1A2130-23220	GEAR 40,SLIDE	1	1	1	1	1			
12	1	22242-000170	RING, 17	1	1	1	1	1			
13	1	24101-062024	BEARING, BALL 6202	1	1	1	1	1			
14	1	24101-062034	BEARING, BALL 6203	1	1	1	1	1			
15	1	1A2138-23500	CHAIN EK50X46,ROLLER	1	1	1	1	1			
16	1	1A2130-23830	GEAR 40X20	1	1	1	1	1			
17	1	1A2130-23900	SHAFT CMP.,H FINAL	1	1	1	1	1			
18	1	24101-062024	BEARING, BALL 6202	2	2	2	2	2			
19	1	1A2000-24000	SEE-1A2138-24000	1	1						
19-1	1	1A2138-24000	AXLE COMPL, (A=F000207) (B=F000207)	1	1	1	1	1			S
20	1	1A2000-24030	COLLAR 26X34X4.5	1	1	1	1	1			
21	1	1A2000-24600	SEAL 254411,OIL	2	2	2	2	2			
22	1	24101-062054	BEARING, BALL 6205	2	2	2	2	2			
23	1	1A2138-23020	MAIN SHAFT CMP						1	1	
24	1	24421-173007	SEAL, OIL TC173007						2	2	
25	1	22242-000170	RING, 17						1	1	
26	1	1A2138-23020	MAIN SHAFT CMP (C=F000966)			1					W
27	1	22242-000170	RING, 17 (C=F000966)			1					W
28	1	24421-173007	SEAL, OIL TC173007 (C=F000966)			2					W

Fig.5. MAIN CHANGE

5. MAIN CHANGE



N069293

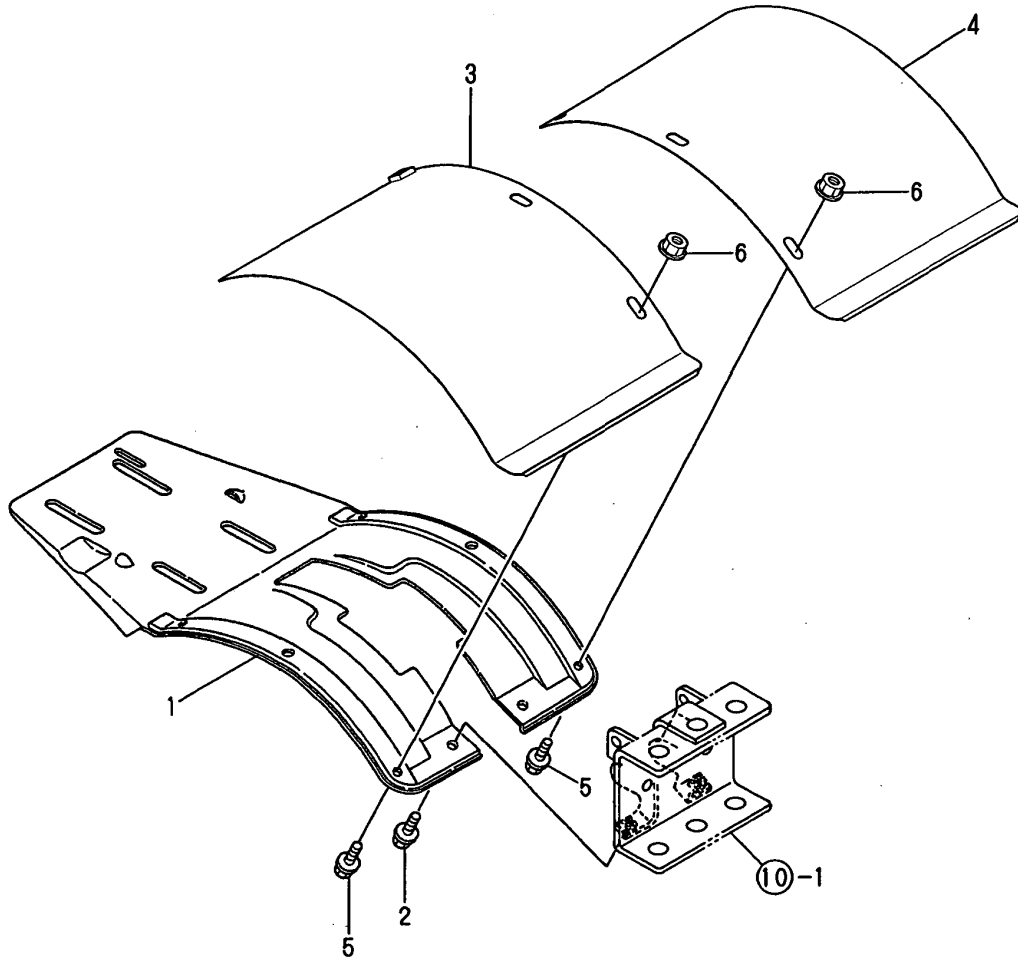
(A)=YK382
(B)=YK382-Y
(C)=YK402G

(D)=YK402C
(E)=YK402P
(F)=

No.	Lev.	Parts No.	Description	Q'ty						I	R
				(A)	(B)	(C)	(D)	(E)	(F)		
1	1	1A2130-27000	SHAFT A COMPL.,FORK	1	1	1	1	1			
2	1	1A2130-27050	SHAFT B COMPL.,FORK	1	1	1	1	1			
3	1	1A1950-27100	PLATE,BALL KEEP	1	1	1					
3-1	1	1A1950-27101 (A=F000611)	PLATE,BALL KEEP (B=F000611) (C=F000111)	1	1	1				N	
3-2	1	1A2130-27100 (A=F000611)	PLATE,BALL KEEP (B=F000611) (C=F000111)	1	1	1	1	1		N	
4	1	1A1104-28230	OIL SEAL 12184	2	2	2	2	2			
5	1	1E6150-56040	SPRING, FORK	2	2	2	2	2			
6	1	1A1750-90200	SCREW 6X12,COLLAR HD	3	3	3	3	3			
7	1	24190-100001	BALL, STEEL 5/16	4	4	4	4	4			

Fig.6. FENDER

6. FENDER



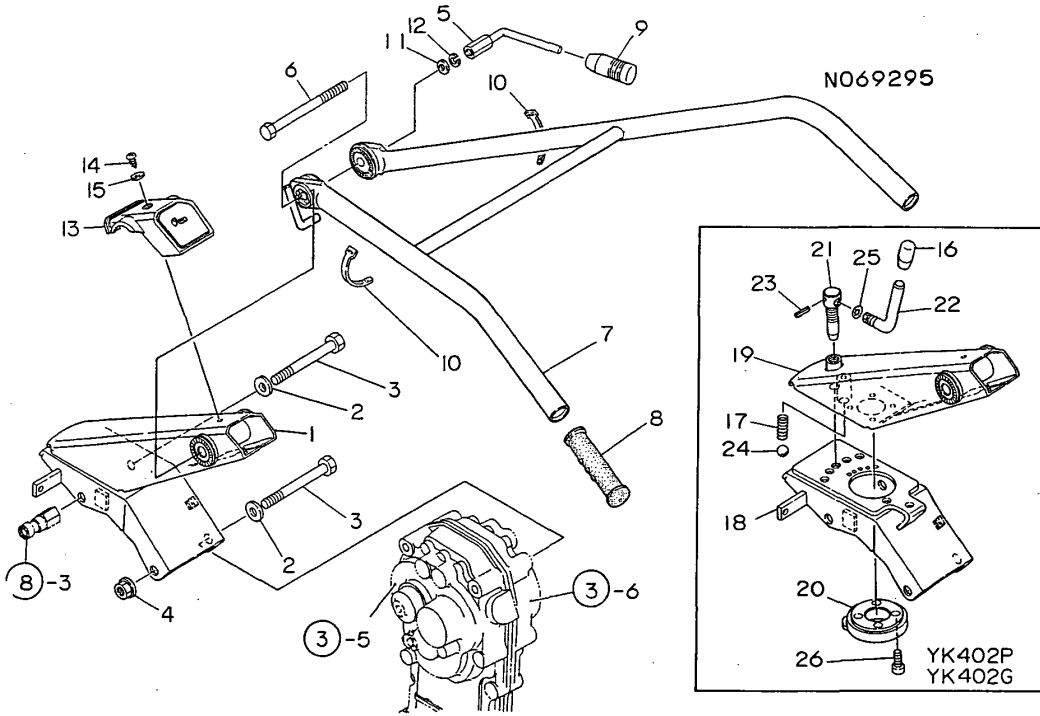
(A)=YK382
(B)=YK382-Y
(C)=YK402G

(D)=YK402C
(E)=YK402P
(F)=

No.	Lev.	Parts No.	Description	Qty						I	R
				(A)	(B)	(C)	(D)	(E)	(F)		
1	1	1A2130-32000	FENDER	1	1	1	1	1			
2	1	26107-080122	BOLT M 8X 12 PLATED	2	2	2	2	2			
3	1	1A2138-32090	FENDER,EXTENSION			1	1	1		W	
4	1	1A2138-32150	FENDER,EXTENSION (C=F001916) (D=F001743) (E=F001658)			1	1	1		W	
5	1	26106-080122	BOLT, M8X 12 PLATED (C=F001916) (D=F001743) (E=F001658)			6	6	6		W	
6	1	26367-080002	NUT, M8 (C=F001916) (D=F001743) (E=F001658)			5	5	5		W	

Fig.7. HANDLE

7. HANDLE



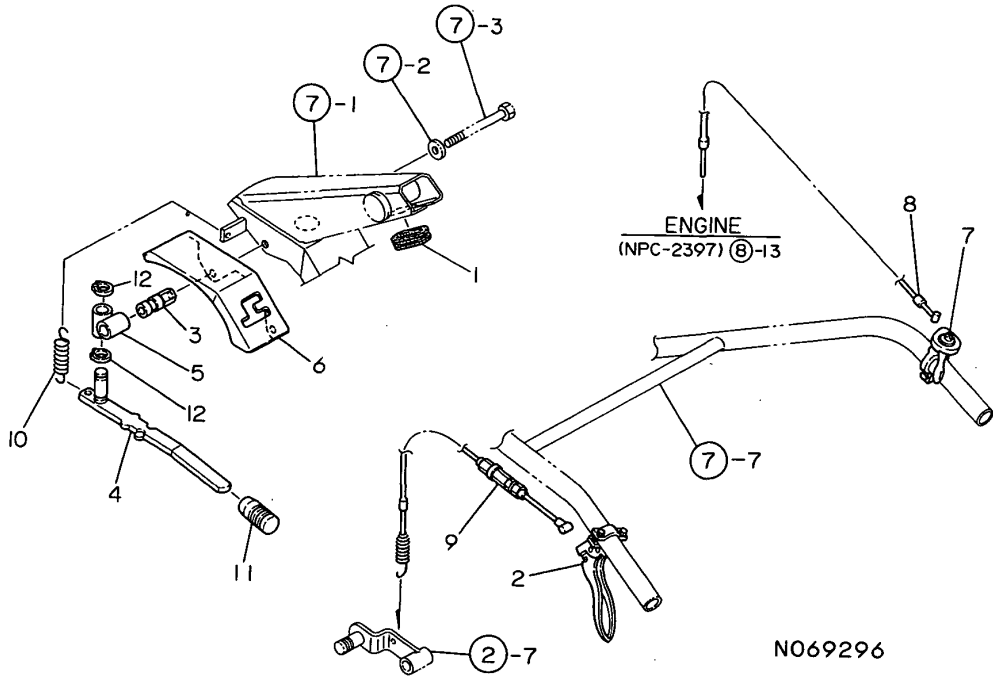
(A)=YK382
(B)=YK382-Y
(C)=YK402G

(D)=YK402C
(E)=YK402P
(F)=

No.	Lev.	Parts No.	Description	Qty						I	R
				(A)	(B)	(C)	(D)	(E)	(F)		
1	1	1A2130-51300	COLUMN CMP, FIX. HANDL	1	1		1				
2	1	22137-100000	WASHER, 10	2	2		2	2	2		
3	1	26157-101002	BOLT, M10X100 PLATED	2	2		2	2	2		
4	1	26377-100002	NUT, M10	1	1		1	1	1		
5	1	1A2000-51400	LEVER CMP., HANDLE LC	1	1		1	1	1		
6	1	1A2000-51430	BOLT 12X125	1	1		1	1	1		
7	1	1A2099-51500	HANDLE COMPL.	1	1		1	1	1		
8	1	192040-56220	GRIP, HANDLE	2	2		2	2	2		
9	1	1E6570-65750	GRIP, CONT. LEVER BLK.	1	1		1	1	1		
10	1	1E6102-84970	BAND 140, WIRE LOCK	2	2		2	2	2		
11	1	22137-120000	WASHER, 12	1	1		1	1	1		
12	1	22217-120000	WASHER, SPRING 12	1	1		1	1	1		
13	1	1A2130-51400	COVER, HANDLE FRAME	1	1		1	1	1		
14	1	1A1750-90050	SCREW 5X10, TAPPING	1	1		1	1	1		
14-1	1	1A1750-90060	SCREW 5X16, TAPPING	1	1		1	1	1		R
		(A=FXXX)	(B=FXXX)	(C=FXXX)	(D=FXXX)						
15	1	1A1750-90150	WASHER 5, PLAIN	1	1		1	1	1		
16	1	1D2040-15480	KNOB, LEVER				1		1		
17	1	1A1470-40350	SPRING 9X26				1		1		
18	1	1A2130-51050	BRACKET ASSY, REGULAT				1		1		
19	1	1A2130-51100	FRAME COMPL., HANDLE				1		1		
20	1	1A2130-51200	METAL, MOVE-RD. CORE				1		1		
21	1	1A2130-51210	PIN, LOCK				1		1		
22	1	1A2130-51220	LEVER, WHT. MOVE-ROUND				1		1		
23	1	22351-040016	PIN, SPRING 4.0X16				1		1		
24	1	24190-120001	BALL, STEEL 3/8				1		1		
25	1	24311-000050	O-RING, 1AP5.0				1		1		
26	1	26450-080202	BOLT, M8X 20				4		4		

Fig.8. TRAVELING CONTROL LEVER

8. TRAVELING CONTROL LEVER



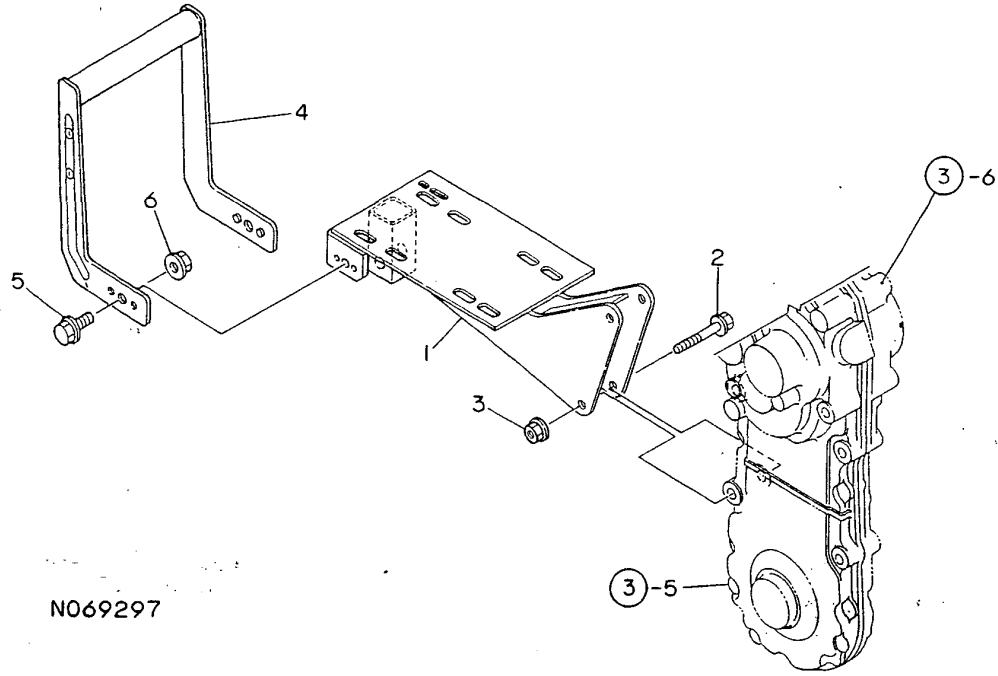
(A)=YK382
(B)=YK382-Y
(C)=YK402G

(D)=YK402C
(E)=YK402P
(F)=

No.	Lev.	Parts No.	Description	Qty						I	R
				(A)	(B)	(C)	(D)	(E)	(F)		
1	1	1A1470-40301	BAND,WIRE PROTECTIVE	1	1	1	1	1			
2	1	1A1107-54010	LVEVER MAIN CLUTCH	1	1	1	1	1			
3	1	1A2130-55050	PIN,CHG.LVR.FULCRUM	1	1	1	1	1			
4	1	1A2130-55100	LEVER COMP.,CHANGE	1	1	1	1	1			
5	1	1A2130-55150	FULCRUM COMP.,CHANGE	1	1	1	1	1			
6	1	1A2130-55200	COVER,CHANGE	1	1	1	1	1			
7	1	1A1402-40750	LEVER,THROTTLE	1	1	1	1	1			
8	1	1A2130-55520	WIRE, ACCEL	1	1	1	1	1			
9	1	1A2099-55750	WIRE CMP,MAIN CLUTCH	1	1	1	1	1			
10	1	1A2000-55830	SPRING,CHANGE LEVER	1	1	1	1	1			
11	1	1E6570-65750	GRIP,CONT.LEVER BLK.	1	1	1	1	1			
12	1	22242-000120	RING, 12	2	2	2	2	2			

Fig.9. ENGINE FRAME

9. ENGINE FRAME



N069297

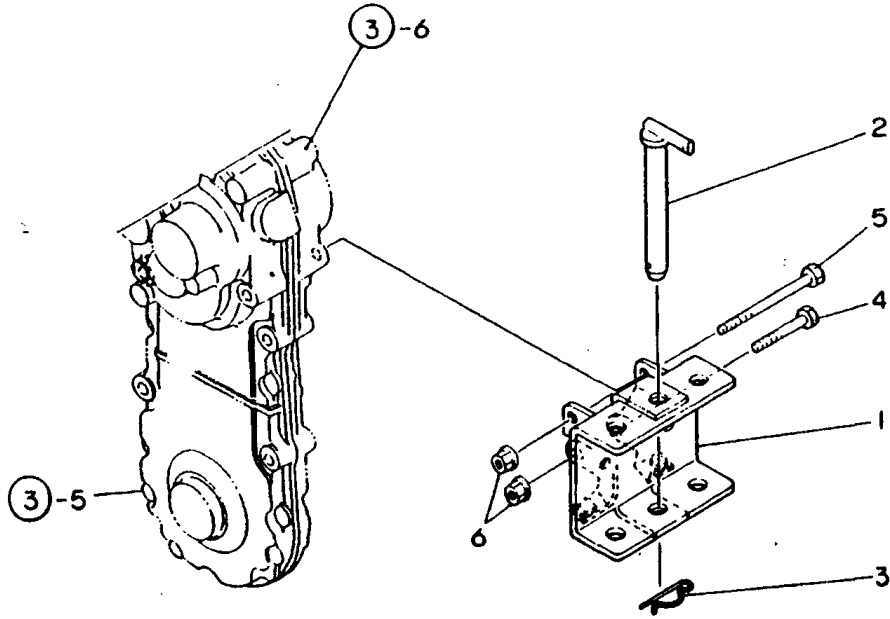
(A)=YK382
(B)=YK382-Y
(C)=YK402G

(D)=YK402C
(E)=YK402P
(F)=

No.	Lev.	Parts No.	Description	Q'ty						I	R
				(A)	(B)	(C)	(D)	(E)	(F)		
1	1	1A2130-61000	FRAME COMP.,ENGINE	1	1						
1-1	1	1A2130-61001	FRAME COMP.,ENGINE	1	1						N
		(A=F000207)	(B=F000207)								
1-2	1	1A2130-61002	FRAME COMP.,ENGINE	1	1	1	1	1	1		N
		(A=F000261)	(B=F000261)								
2	1	26137-100502	BOLT, M10X 50 PLATED	2	2	2	2	2	2		
3	1	26377-100002	NUT, M10	2	2	2	2	2	2		
4	1	1A1750-60800	BUMPER COMPL	1	1	1	1	1	1		
5	1	26107-080162	BOLT M 8X 16 PLATED	2	2	2	2	2	2		
6	1	26367-080002	NUT, M8	2	2	2	2	2	2		

Fig.10. HITCH

10. HITCH



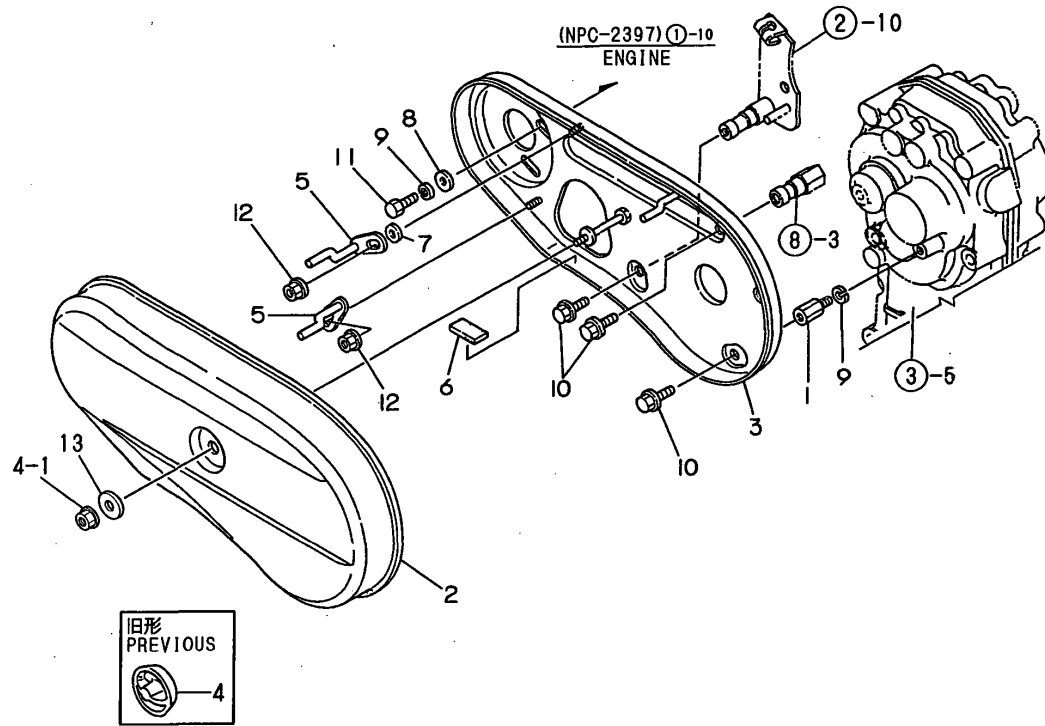
(A)=YK382
(B)=YK382-Y
(C)=YK402G

(D)=YK402C
(E)=YK402P
(F)=

No.	Lev.	Parts No.	Description	Q'ty						I	R
				(A)	(B)	(C)	(D)	(E)	(F)		
1	1	1A2138-61200	HITCH 95-B COMPL.	1	1	1	1	1			
2	1	1A1040-81100	PIN, HITCH	1	1	1	1	1			
3	1	22360-160000	PIN, SNAP 16	1	1	1	1	1			
3-1	1	1A2860-61450	SNAP PIN 16	1	1	1	1	1		N	
		(A=FXXXXX) (B=FXXXXX) (C=FXXXXX) (D=FXXXXX) (E=FXXXXX)									
4	1	26156-100552	BOLT, M10X 55 PLATED	1	1	1	1	1			
5	1	26156-100952	BOLT, M10X 95 PLATED	1	1	1	1	1			
6	1	26367-100002	NUT, M10	2	2	2	2	2			

Fig.11. HANDLE COVER

11. HANDLE COVER



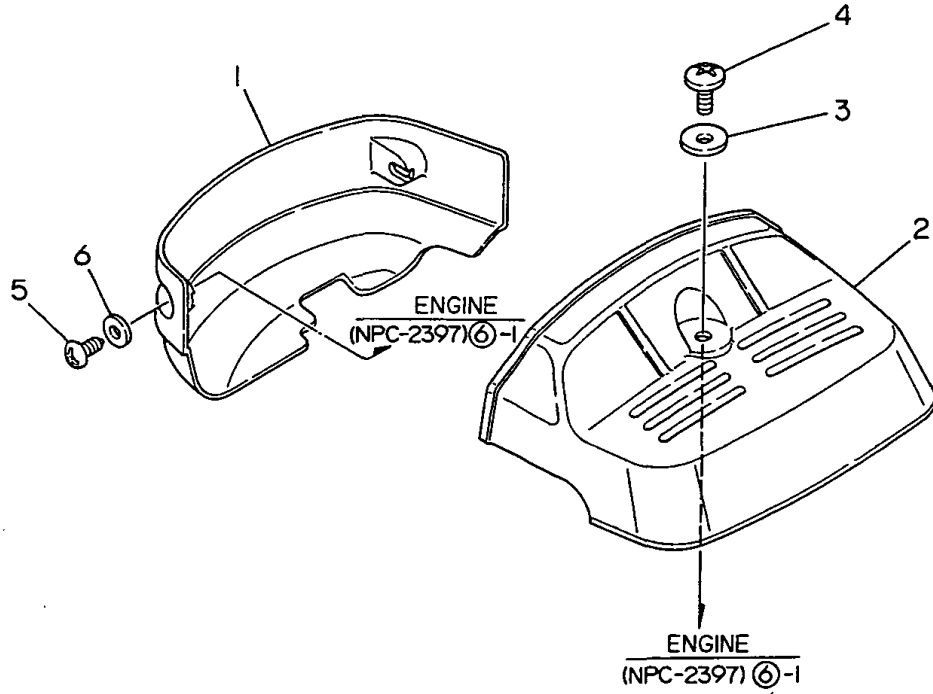
(A)=YK382
(B)=YK382-Y
(C)=YK402G

(D)=YK402C
(E)=YK402P
(F)=

No.	Lev.	Parts No.	Description	Qty						I	R
				(A)	(B)	(C)	(D)	(E)	(F)		
1	1	1A1490-10340	STUD 22.5,BACK COVER	1	1	1	1	1			
2	1	1A2130-62010	COVER, BELT	1	1	1	1	1			
3	1	1A2130-62200	COVER COMPL.,BACK	1	1	1	1	1			
4	1	1A2000-62300	KNOB,BELT COVER	1	1	1	1	1			
4-1	1	26367-080002	NUT, M8			1	1	1		S	
			(C=F001648) (D=F001743) (E=F001604)								
5	1	1A2000-62400	RETAINER COMP.,BELT	2	2	2	2	2			
6	1	1A2000-62481	CUSHION	1	1					Z	
			(A=F000207) (B=F000207)								
7	1	22137-060000	WASHER, 6	1	1	1	1	1			
8	1	22137-080000	WASHER, 8	2	2	2	2	2			
9	1	22217-080000	WASHER, SPRING 8	3	3	3	3	3			
10	1	26106-080122	BOLT, M8X 12 PLATED	3	3	3	3	3			
11	1	26117-080162	BOLT M 8X 16 PLATED	2	2	2	2	2			
12	1	26367-060002	NUT, M6	2	2	2	2	2			
13	1	22157-080000	WASHER, 8			1	1	1		W	
			(C=F001648) (D=F001743) (E=F001604)								

Fig.12. BONNET

12. BONNET



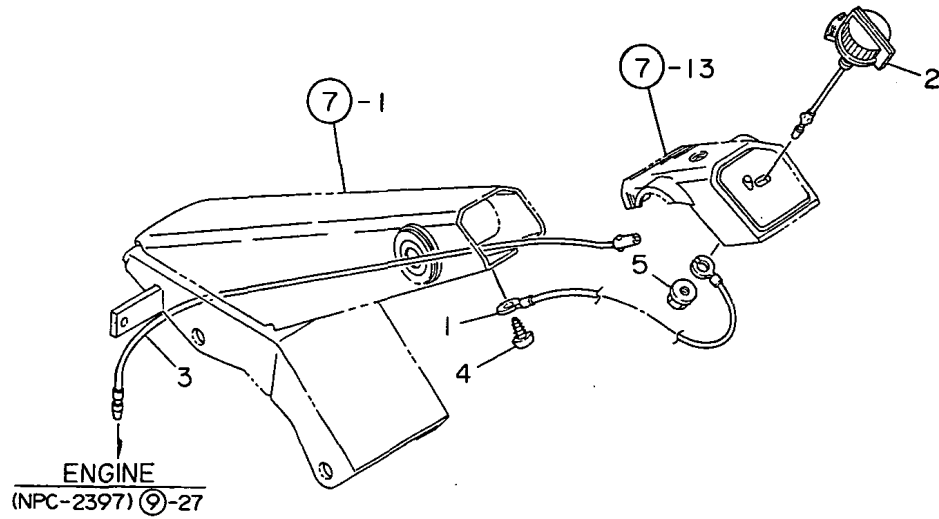
(A)=YK382
(B)=YK382-Y
(C)=YK402G

(D)=YK402C
(E)=YK402P
(F)=

No.	Lev.	Parts No.	Description	Q'ty						I	R
				(A)	(B)	(C)	(D)	(E)	(F)		
1	1	1A2000-64100	MASK, FRONT	1	1	1	1	1			
2	1	1A2150-64200	COVER, REAR (40	1	1	1	1	1			
2-1	1	1A2150-64201	COVER,REAR(40W			1	1	1		N	
3	1	1A2000-64210	WASHER 6X19X1.0			(C=F001517)	(D=F001573)	(E=F001388)			
4	1	1A2000-64220	SCREW 6X16	1	1	1	1	1			
5	1	1A1750-90050	SCREW 5X10,TAPPING	2	2	2	2	2			
6	1	1A1750-90150	WASHER 5,PLAIN	2	2	2	2	2			

Fig.13. ELECTRICAL PARTS

13. ELECTRICAL PARTS



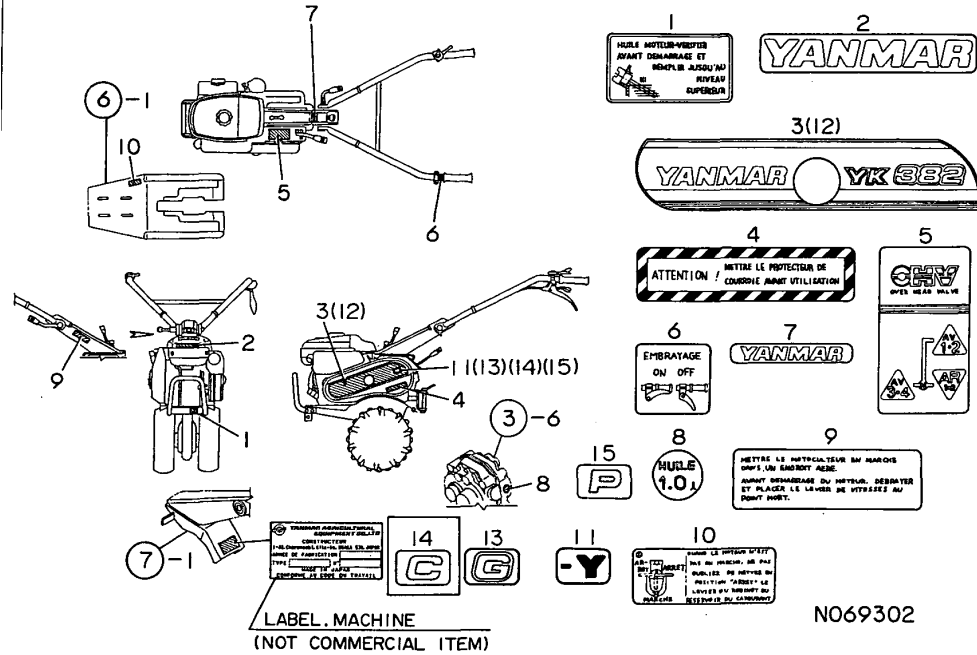
(A)=YK382
(B)=YK382-Y
(C)=YK402G

(D)=YK402C
(E)=YK402P
(F)=

No.	Lev.	Parts No.	Description	Q'ty						I	R
				(A)	(B)	(C)	(D)	(E)	(F)		
1	1	1A1750-40850	CORD,EARTH	1	1	1	1	1			
2	1	1A1470-40900	SWITCH,STOP	1	1	1					
2-1	1	1A1750-40800	SWITCH,STOP	1	1	1	1	1		N	
3	1	1A2000-83100	CORD,STOP SWITCH	1	1	1	1	1			
4	1	1A1750-90050	SCREW 5X10,TAPPING	1	1	1	1				
4-1	1	1A1750-90060	SCREW 5X16,TAPPING	1	1	1	1	1		R	
5	1	26367-080002	NUT, M8	1	1	1	1	1			

Fig.14. LABELS

14. LABELS



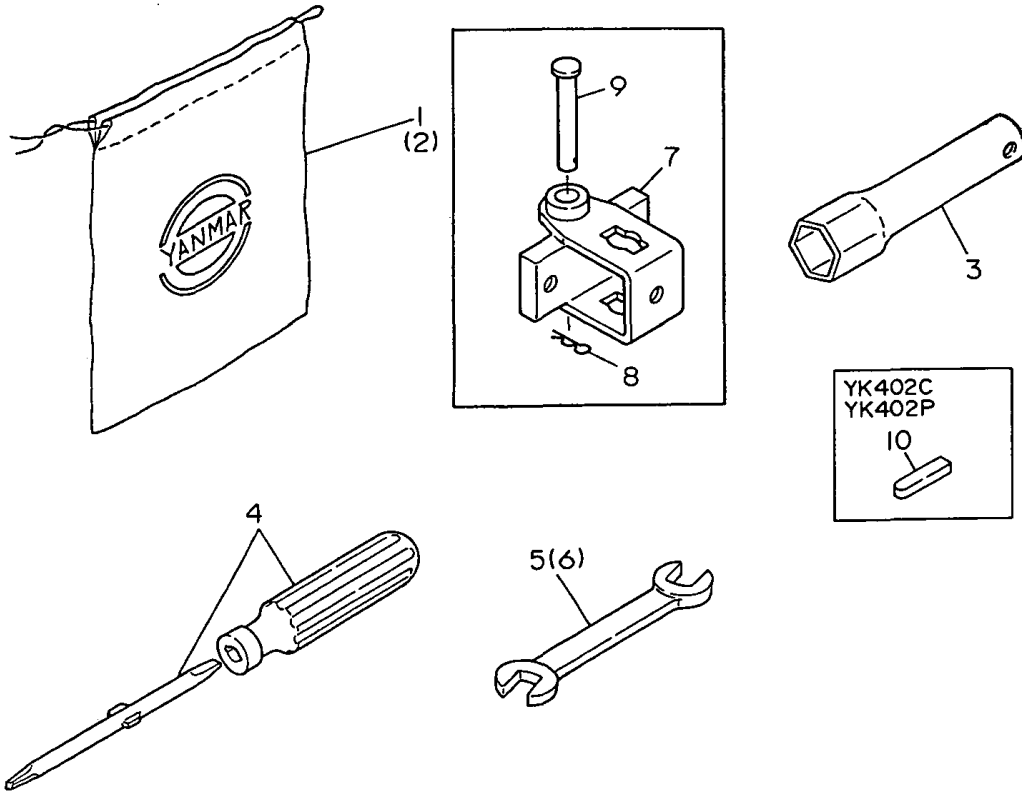
(A)=YK382
(B)=YK382-Y
(C)=YK402G

(D)=YK402C
(E)=YK402P
(F)=

No.	Lev.	Parts No.	Description	Q'ty						I	R
				(A)	(B)	(C)	(D)	(E)	(F)		
1	1	1A1750-83350	LABEL,ENGINE OIL	1	1						
1-1	1	1A2099-86820	LABEL,ENG.OIL,ITA	1	1	1	1	1			R
			(A=F000301)								
2	1	1A2130-86320	LABEL,FUEL TANK	1	1	1	1	1			
3	1	1A2138-86100	LABEL,BONNET	1	1						
4	1	1A2099-86200	LABEL,BELT CVR.SAFTY	1	1						
4-1	1	1A2099-86300	LABEL,CVR.SAFTY	1	1	1	1	1			R
			(A=F000301)								
5	1	1A2138-86200	LABEL 382.CHANGE	1	1	1	1	1			
6	1	1A2099-86210	LABEL,MAIN CLUTCH	1	1						
6-1	1	1A2099-86340	LABEL,MAIN CLUTCH	1	1	1	1	1			R
			(A=F000301)								
7	1	1A2130-86500	LABEL,HANDLE COVER	1	1	1	1	1			
8	1	1A2138-86700	LABEL "1.0",OIL	1	1						
8-1	1	1A2138-86701	LABEL '1',OIL	1	1	1	1	1			R
			(A=F000301) (B=F000301)								
9	1	1A1107-88130	LABEL	1	1						
9-1	1	1A2099-86320	LABEL,CAUTION	1	1	1	1	1			R
			(A=F000301)								
10	1	160602-07800	LABEL,FUEL COCK	1	1						
10-1	1	1A2099-86360	LABEL,FUEL COCK	1	1	1	1	1			R
			(A=F000301)								
11	1	1A1311-88500	MARK 'Y'		1						W
			(B=F000301)								
12	1	1A2138-86120	LABEL,BONNET(402)			1	1	1			
13	1	1A2019-86170	MARK 'G'			1					
14	1	1A2019-86150	MARK "C"					1			
15	1	1A2138-86150	MARK "P"							1	

Fig.15. TOOLS

15. TOOLS



(A)=YK382
(B)=YK382-Y
(C)=YK402G
(D)=YK402C
(E)=YK402P
(F)=

No.	Lev.	Parts No.	Description	Q'ty						I	R
				(A)	(B)	(C)	(D)	(E)	(F)		
1	1	1A1540-87030 (A=FXXXXXX) (B=FXXXXXX)	TOOL BAG	1	1						Z
2	1	1A1750-83900	TOOL BAG	1	1	1	1	1			
3	1	160110-92700	WRENCH, 21 L140	1	1	1	1	1			
4	1	160330-92730	DRIVE, SCREW	1	1	1	1				
4-1	1	1D2040-87060 (A=FXXX) (B=FXXX) (C=FXXX) (D=FXXX)	SCREWDRIVER,COMBINAT	1	1	1	1	1			R
5	1	28110-100120	SPANNER, 10X12	1	1	1	1	1			
6	1	28110-120140	SPANNER, 12X14	1	1	1	1	1			
7	1	7S0070-15000	UNIVIR SAL HITCH				1	1			
8	1	22372-060000	PIN, SNAP 6	2	2	2	2	2			
9	1	22487-060400	PIN 6X 40	2	2	2	2	2			
10	1	22550-050201	KEY, 5X 20					1	1		

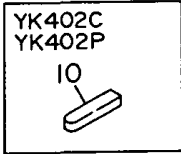
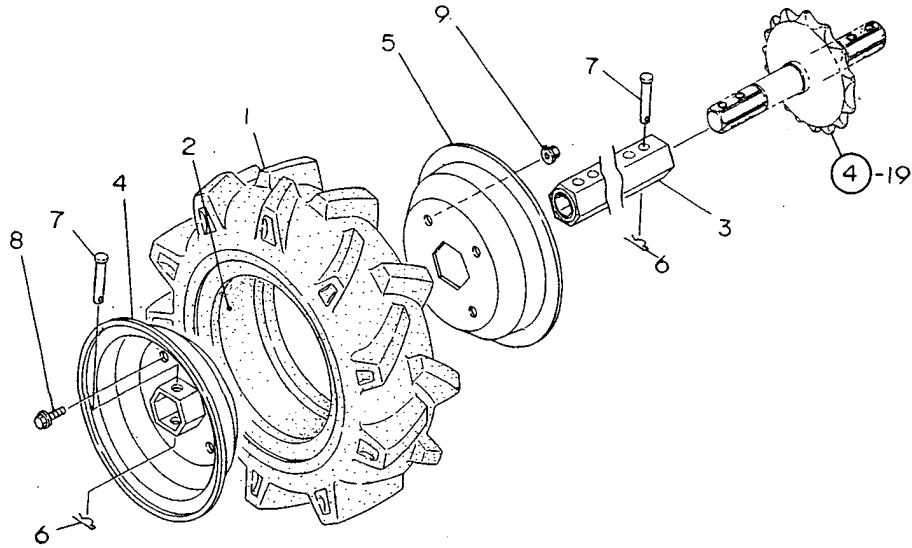


Fig.17. TIRE 3.50-6(ADD,ITEM)

17. TIRE 3.50-6 (ADD, ITEM)



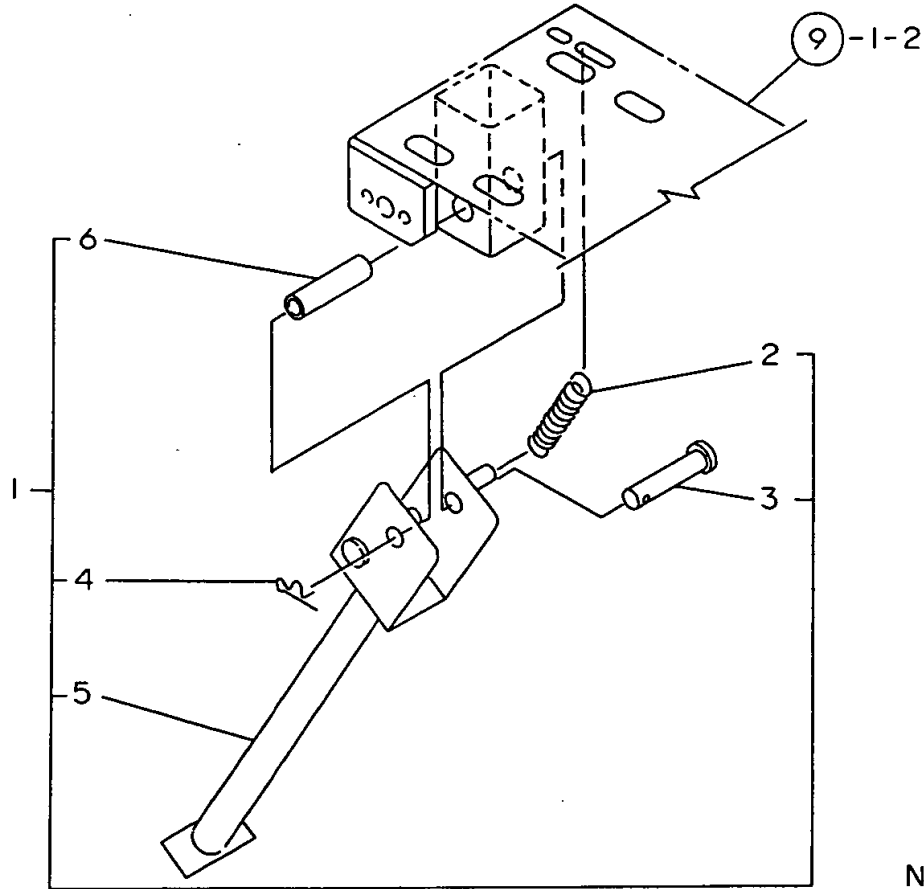
(A)=YK382
(B)=YK382-Y
(C)=YK402G

(D)=YK402C
(E)=YK402P
(F)=

No.	Lev.	Parts No.	Description	Q'ty						I	R
				(A)	(B)	(C)	(D)	(E)	(F)		
1	1	1A1470-30070	TIRE 3.50-6			2					
2	1	1A1470-30080	TUBE 3.50-6,TIRE			2					
3	1	1A2138-31100	PIPE E190,AXLE			2					
4	1	1A2010-31301	WHEEL,TIRE OUTER			2					
5	1	1A2010-31311	WHEEL,TIRE INNER			2					
6	1	1A1540-46020	PIN 8,SNAP			4					
7	1	22486-080450	PIN, H 8X 45			4					
8	1	26107-080142	BOLT M 8X 14 PLATED			8					
9	1	26367-080002	NUT, M8			8					

Fig.18. STAND(ADDITIONAL ITEM)

18. STAND(ADDITIONAL ITEM)



NO87414

(A)=YK382
(B)=YK382-Y
(C)=YK402G

(D)=YK402C
(E)=YK402P
(F)=

No.	Lev.	Parts No.	Description	Q'ty						I	R
				(A)	(B)	(C)	(D)	(E)	(F)		
1	1	7A2130-61501	STAND ASSY.,OPR			1			1		
2	2	1A1105-16001	SPRING,MN.CLTCH LVR.			1			1		
3	2	1A1400-36050	PIN 8X55,AXLE			1			1		
4	2	1A1540-46020	PIN 8,SNAP			1			1		
5	2	1A2130-61500	STAND COMP.,OPERAT'N			1			1		
6	2	1A2130-61580	PIPE,STAND FULCRUM			1			1		

Parts No. Index

Parts No.	Fig. No.	Ref. No.
160110-92700	15	3
160330-92730	15	4
160602-07800	14	10
192040-56220	7	8
1A1040-81100	10	2
1A1104-28230	5	4
1A1105-15200	2	3
1A1105-16001	18	2
1A1107-54010	8	2
1A1107-88130	14	9
1A1220-28290	3	17
1A1311-88500	14	11
1A1400-36050	18	3
1A1402-40750	8	7
1A1470-10040	2	1
1A1470-20090	3	1
1A1470-30070	17	1
1A1470-30080	17	2
1A1470-40301	8	1
1A1470-40350	7	17
1A1470-40900	13	2
1A1490-10340	11	1
1A1540-46020	17	6
	18	4
1A1540-87030	15	1
1A1750-20410	3	2
	4	1
		1 -1
1A1750-20421	3	3
1A1750-20431	3	4
1A1750-40800	13	2 -1
1A1750-40850	13	1
1A1750-60800	9	4
1A1750-83350	14	1
1A1750-83900	15	2
1A1750-90050	7	14
	12	5
	13	4
1A1750-90060	7	14 -1
	13	4 -1
1A1750-90150	7	15
	12	6
1A1750-90200	5	6
1A1950-21000	3	5
1A1950-21200	3	9
1A1950-27100	5	3
1A1950-27101	5	3 -1
1A2000-13050	2	8
1A2000-13051	2	8 -1
1A2000-13052	2	8 -2

Parts No.	Fig. No.	Ref. No.
1A2000-13190	2	9
1A2000-24000	4	19
1A2000-24030	4	20
1A2000-24600	4	21
1A2000-51400	7	5
1A2000-51430	7	6
1A2000-55830	8	10
1A2000-62300	11	4
1A2000-62400	11	5
1A2000-62481	11	6
1A2000-64100	12	1
1A2000-64210	12	3
1A2000-64220	12	4
1A2000-83100	13	3
1A2001-21250	3	13 -1
1A2010-31301	17	4
1A2010-31311	17	5
1A2019-86150	14	14
1A2019-86170	14	13
1A2099-51500	7	7
1A2099-55750	8	9
1A2099-86200	14	4
1A2099-86210	14	6
1A2099-86300	14	4 -1
1A2099-86320	14	9 -1
1A2099-86340	14	6 -1
1A2099-86360	14	10 -1
1A2099-86820	14	1 -1
1A2130-12000	1	7
1A2130-13000	2	7
1A2130-13200	2	10
1A2130-13300	2	2
1A2130-21010	3	6
1A2130-21050	3	7
1A2130-21060	3	8
1A2130-23020	4	3
1A2130-23030	4	4
1A2130-23110	4	8
1A2130-23200	4	9
1A2130-23210	4	10
1A2130-23220	4	11
1A2130-23830	4	16
1A2130-23900	4	17
1A2130-27000	5	1
1A2130-27050	5	2
1A2130-27100	5	3 -2
1A2130-32000	6	1
1A2130-51050	7	18
1A2130-51100	7	19
1A2130-51200	7	20

Parts No.	Fig. No.	Ref. No.
1A2130-51210	7	21
1A2130-51220	7	22
1A2130-51300	7	1
1A2130-51400	7	13
1A2130-55050	8	3
1A2130-55100	8	4
1A2130-55150	8	5
1A2130-55200	8	6
1A2130-55520	8	8
1A2130-61000	9	1
1A2130-61001	9	1 -1
1A2130-61002	9	1 -2
1A2130-61500	18	5
1A2130-61580	18	6
1A2130-62010	11	2
1A2130-62200	11	3
1A2130-86320	14	2
1A2130-86500	14	7
1A2138-23000	4	2
		2 -1
1A2138-23020	4	23
		26
1A2138-23500	4	15
1A2138-24000	4	19 -1
1A2138-31100	17	3
1A2138-32090	6	3
1A2138-32150	6	4
1A2138-61200	10	1
1A2138-86100	14	3
1A2138-86120	14	12
1A2138-86150	14	15
1A2138-86200	14	5
1A2138-86700	14	8
1A2138-86701	14	8 -1
1A2150-64200	12	2
1A2150-64201	12	2 -1
1A2860-61450	10	3 -1
1D1140-11420	1	6
1D2040-15480	7	16
1D2040-87060	15	4 -1
1E4060-74090	4	5
1E6102-84970	7	10
1E6150-56040	5	5
1E6570-65750	7	9
	8	11
1S0090-60000	16	1
22137-060000	11	7
22137-080000	1	1
	11	8
22137-100000	7	2

Parts No.	Fig. No.	Ref. No.
22137-120000	7	11
22157-080000	11	13
22217-080000	1	2
		8
	2	4
	11	9
22217-120000	7	12
22242-000120	8	12
22242-000150	2	11
22242-000170	4	12
		25
		27
22351-040016	7	23
22360-160000	10	3
22372-060000	15	8
22486-080450	17	7
22487-060400	15	9
22512-050300	1	9
	2	3 -1
22550-050201	15	10
22867-600160	3	10
23414-080000	3	11
24101-062024	4	13
		18
24101-062034	4	6
		14
24101-062054	4	22
24190-100001	5	7
24190-120001	7	24
24311-000050	7	25
24421-173007	4	7
		7 -1
		24
		28
25123-003401	1	10
26106-060252	3	12
26106-080122	6	5
	11	10
26107-080122	6	2
26107-080142	17	8
26107-080162	9	5
26117-080122	3	13
26117-080162	1	11
	2	5
	11	11
26117-080402	1	3
26117-080452	1	4
26137-100502	3	14
	9	2
26156-100552	10	4

Parts No. Index

Parts No.	Fig. No.	Ref. No.
26156-100952	10	5
26157-101002	2	12
	7	3
26367-060002	3	15
	11	12
26367-080002	6	6
	9	6
	11	4 -1
	13	5
	17	9
26367-100002	10	6
26377-100002	2	13
	3	16
	7	4
	9	3
26450-080202	7	26
26476-060142	2	6
26717-080002	1	5
28110-100120	15	5
28110-120140	15	6
7A2130-61501	18	1
7S0070-15000	15	7

Parts No.	Fig. No.	Ref. No.
-----------	----------	----------

Parts No.	Fig. No.	Ref. No.
-----------	----------	----------

Parts No.	Fig. No.	Ref. No.
-----------	----------	----------